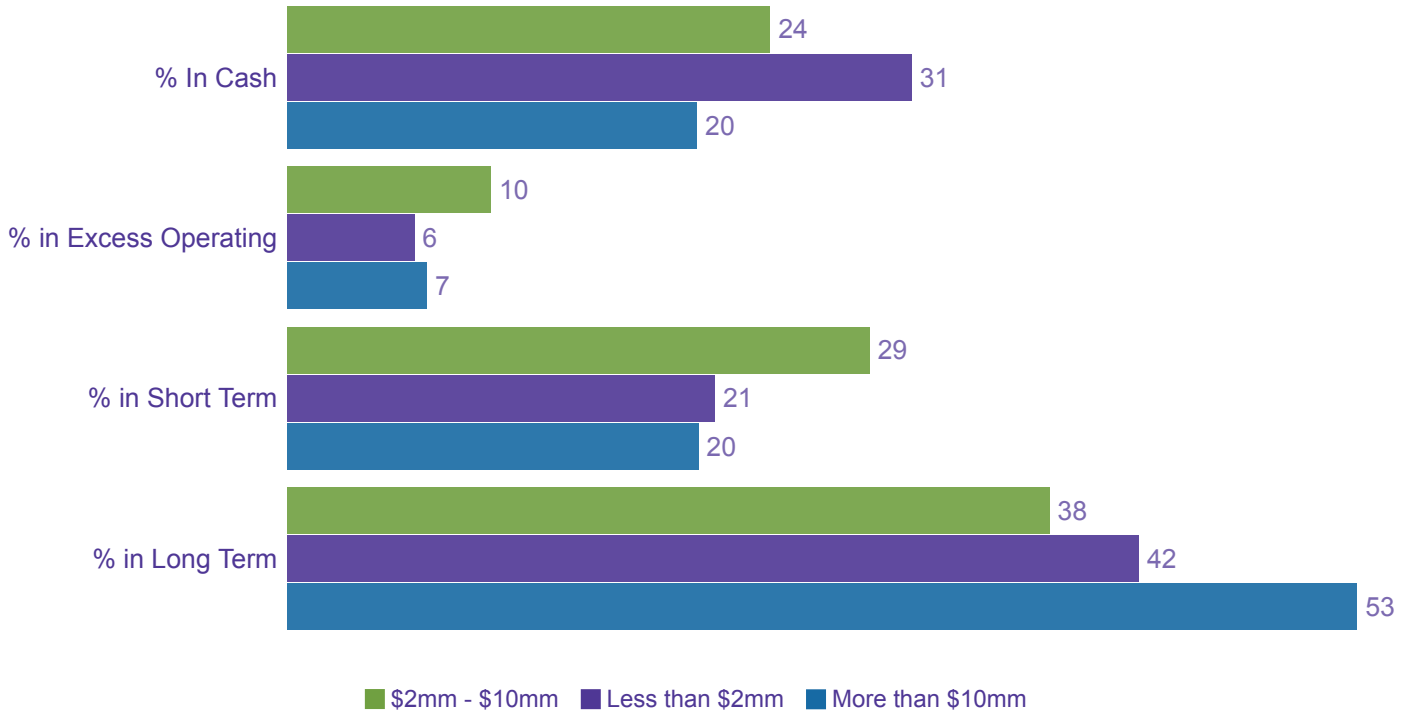
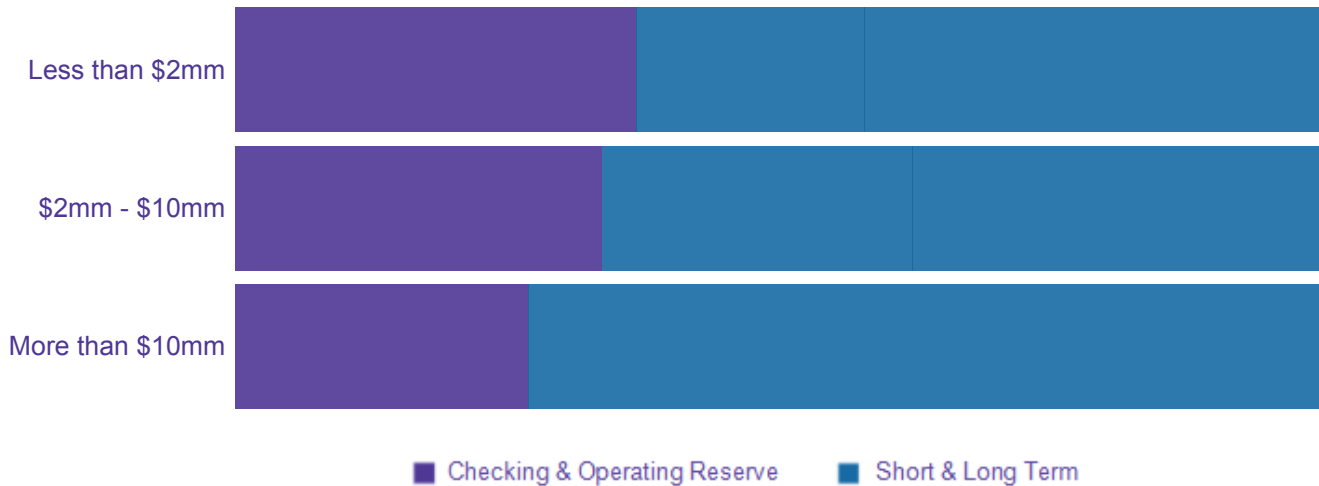


Segmentation & Asset Allocation

How Much of an Organization's Total Cash Assets are Held in Operating, Short-term, or Long-term Accounts

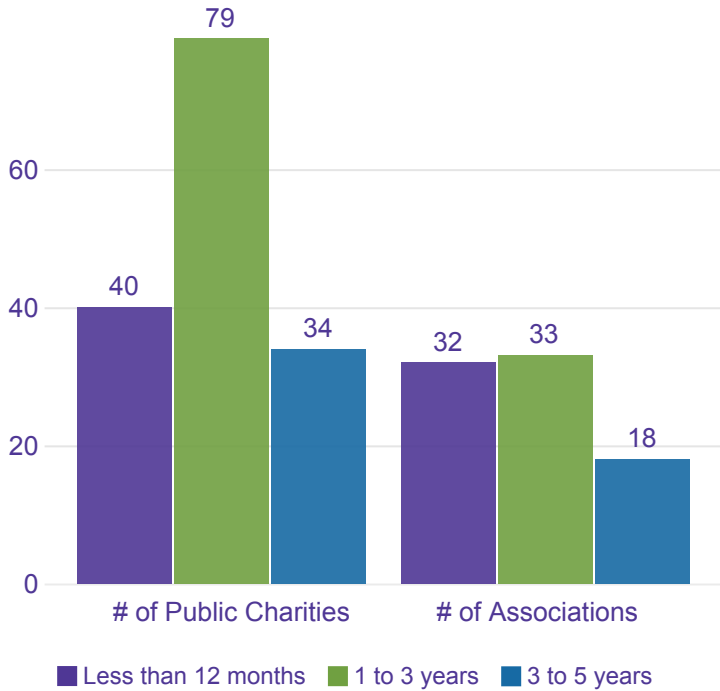


Segmentation of Total Liquid Assets

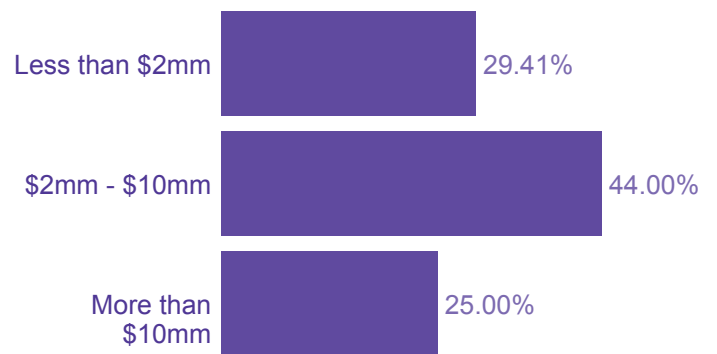


Short Term Investments

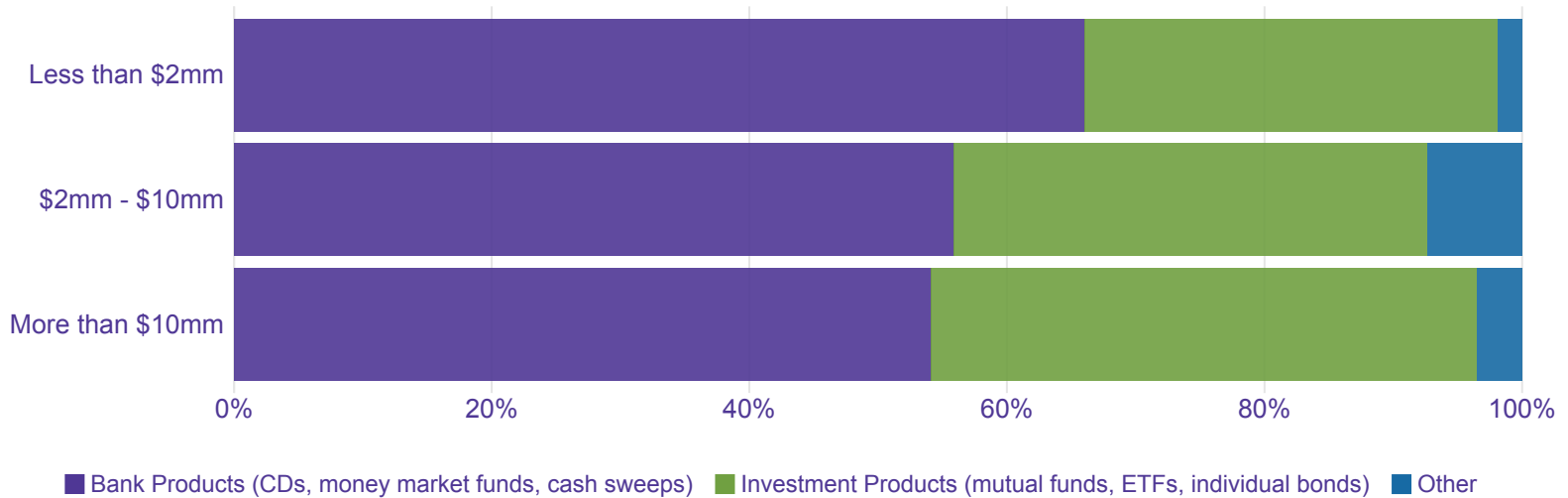
Time Frame for when organization's expect to use Short Term Portfolio funds



Short Term Portfolios with an Equity Allocation



Investment Products Used in Short Term Portfolios

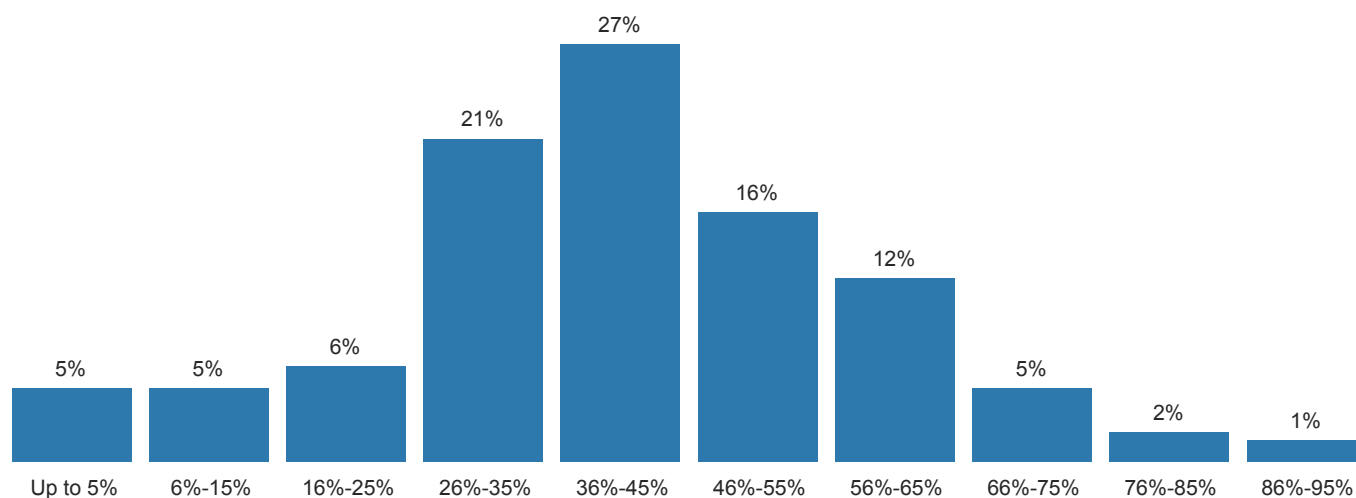


Long Term Asset Allocation

Percentage of Long Term Portfolio allocated to each of the following Asset Classes

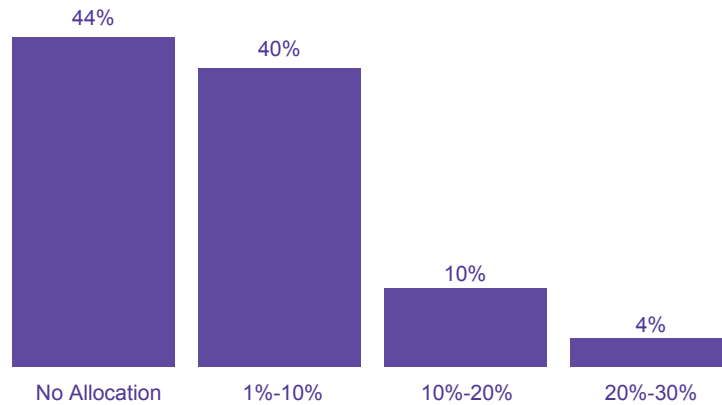
Asset Class	% Allocation (Average)
U.S. Equities (e.g., U.S. stocks, stock mutual funds, stock ETF's, publicly traded REIT's, etc.)	41.30
International Equities (e.g., international stocks, international stock mutual funds, ETF's, etc.)	13.73
Fixed Income (e.g., individual bonds, bond mutual funds, bond ETF's, etc.)	32.19
Alternatives (e.g., precious metals, hedge funds, commodities, private real estate investments, etc.)	5.65
Cash or Equivalents (e.g., CD's money market funds, etc.)	7.12

Frequency of Equity Allocation %



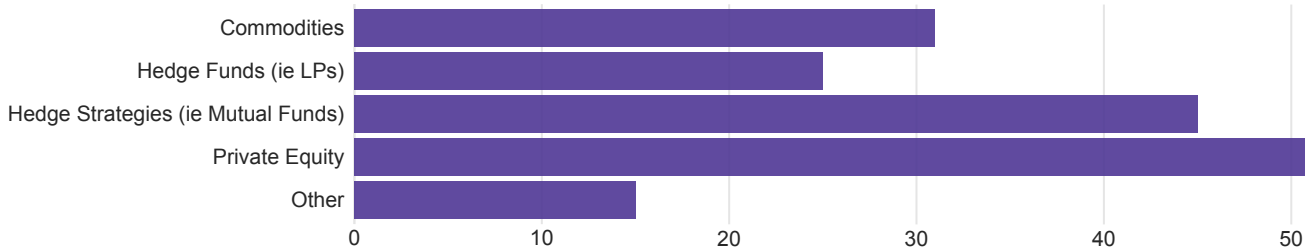
**This frequency chart shows the percentage of participants with equity allocations within each range. This does not include any allocation to alternatives.*

Frequency of Alternative Allocation %



Check out 'Alternative Investments'

Types of Alternative Investment included in Nonprofit Portfolios that Allocate to Alternatives



Percentage of Participants with Socially Responsible Investment Guidelines



Check out 'The First Steps Towards Socially Responsible Investing'